

賽馬會中樂360 十面埋伏 (初級)

劉文金、趙咏山 編曲
譚逸昇 改編

【列營】

威武地

(大鼓)

Musical notation for measure 1 of '列營'. It starts with a treble clef, a key signature of one sharp (F#), and a 2/4 time signature. The melody consists of eighth notes. A fermata is placed over the final note of the measure. Above the staff, there is a bracket with 'oo' underneath it, indicating a long note or a specific articulation.

Musical notation for measures 3-5 of '列營'. Measure 3 starts with a box containing the number '3' and a dynamic marking of *ff*. The melody features quarter notes with accents. Measure 4 has a dynamic marking of *mp* with a hairpin indicating a decrescendo. Measure 5 ends with a fermata and a '2' below the staff, indicating a second ending.

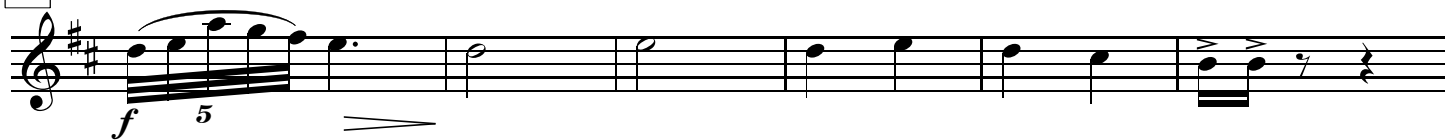
Musical notation for measures 10-17 of '列營'. Measure 10 starts with a box containing the number '10', a dynamic marking of *f*, and the marking 'rit.'. It features a triplet of eighth notes. Measure 11 has a trill marked 'tr' and the character '慢' (slow). Measure 12 has a '2' below the staff. Measure 13 has a '2' below the staff and the instruction '由慢漸快 行板' (Ritardando then Adagio). Measure 14 has a '2' below the staff. Measure 15 has a '2' below the staff. Measure 16 has a '2' below the staff. Measure 17 has a '2' below the staff.

Musical notation for measures 18-22 of '列營'. Measure 18 starts with a box containing the number '18' and the instruction '(柳琴)' (Liuqin). The melody is written in a 2/4 time signature and consists of eighth notes. A fermata is placed over the final note of the measure.

Musical notation for measures 23-27 of '列營'. Measure 23 starts with a box containing the number '23' and the instruction '稍穩' (Moderato). The melody consists of quarter notes. A dynamic marking of *f* is present. Measures 24-27 continue the melody with quarter notes and eighth notes.

Musical notation for measures 28-31 of '列營'. Measure 28 starts with a box containing the number '28' and the instruction '由慢漸快 行板'. It features a '2' below the staff. Measure 29 has a '2' below the staff. Measure 30 has a '4' below the staff. Measure 31 has a fermata and a '2' below the staff, with the instruction '(高笙)' (Gao Sheng) above it. The melody ends with a group of notes marked with a '5' below them.

38



44

由慢漸快



49

【吹打】
自由

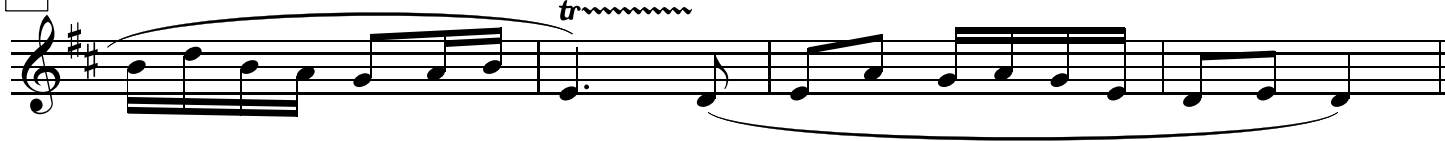
53

中速
[可用曲笛]

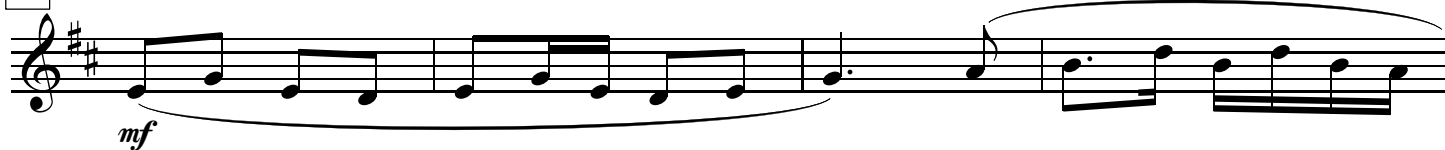
57



61



65



69



73

77

rit.

81 【埋伏】 由慢漸快 4 14 稍漸慢 2

sf

102 (柳琴)

mf

107

mf

112 (二胡)

mf

120 稍慢

ff *f*

125 【小戰】 突轉快板 11 4 (揚琴)

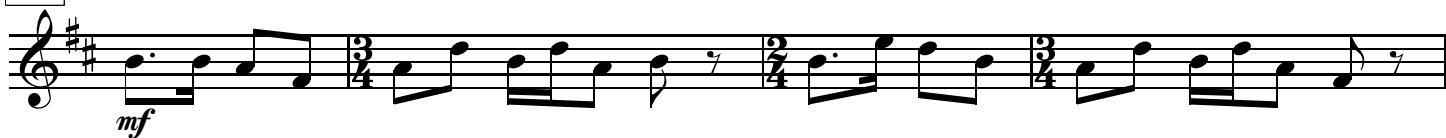
mf

143



149

【奏凱】



153



157



161



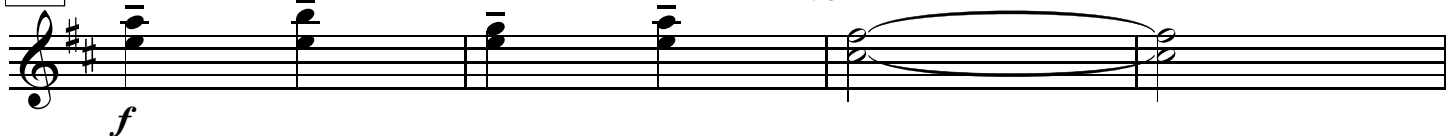
165



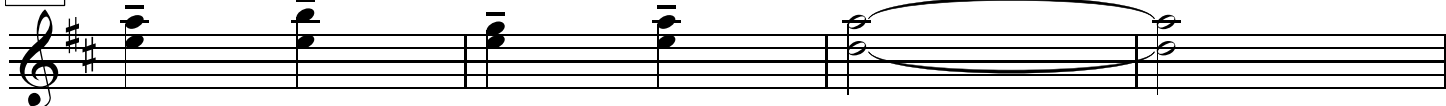
172

molto rit.

慢



176



180

