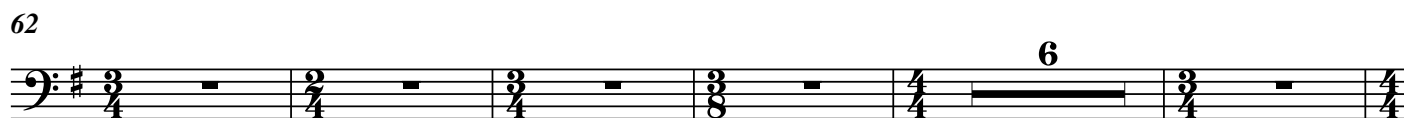
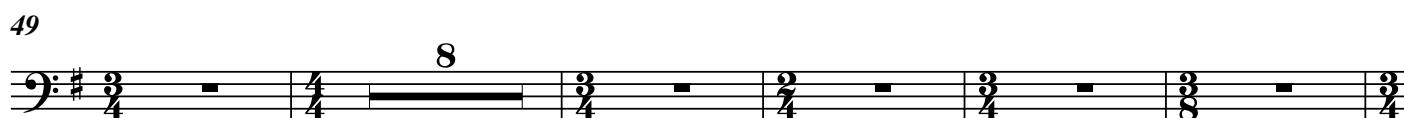
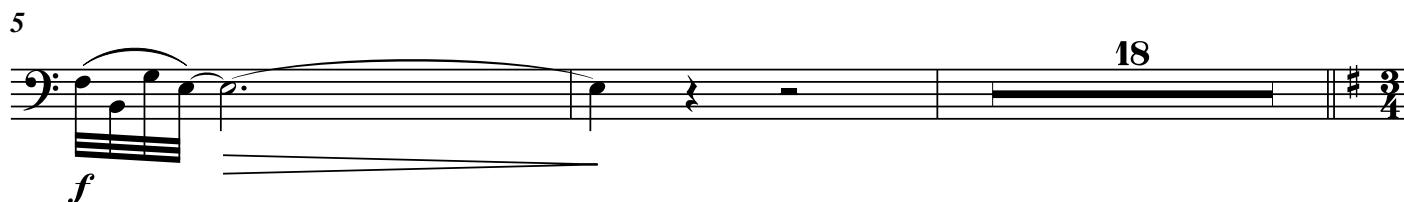


低音嗩吶

唐響

伍卓賢曲
(2017修訂合奏版)

夢 ♩ = 62 ca. 稍自由



219 4 223 30 12

ff

266

f

270

274

278

282

286 7 41

舞 ♩ = 62 ca.

336 12 348

f

351 同 ♩ = 56 16

稍加快

ff

