

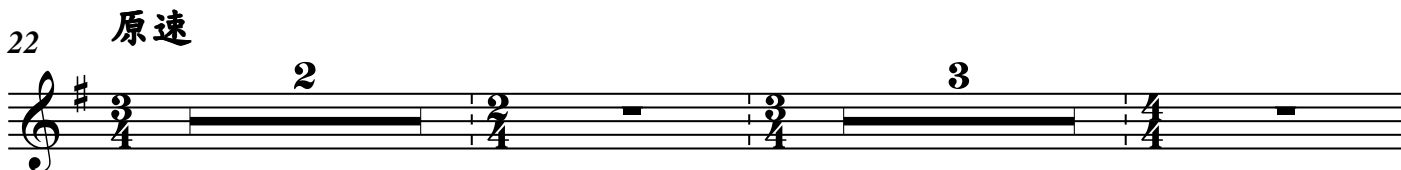
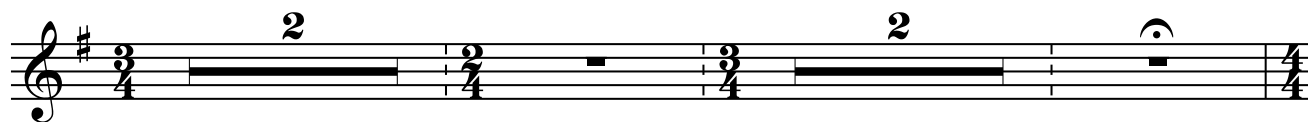
揚琴

普及版樂譜系列

《八仙過海—序奏及主題曲》

(中級)

散板 $\bullet = 116$



39 稍慢漸快

原速



Measures 39-40: Treble clef, key signature of one sharp (F#), 4/4 time signature. The music consists of a continuous eighth-note pattern. Dynamics range from *p* (piano) to *mf* (mezzo-forte).

41 漸快

漸慢



Measures 41-42: Treble clef, key signature of one sharp (F#), 4/4 time signature. The music continues with eighth notes. Dynamics range from *p* to *mf*. Measure 42 ends with a 3/4 time signature change.

43 原速



Measures 43-44: Treble clef, key signature of one sharp (F#), 3/4 time signature. Measure 43 features a half note followed by a quarter note. Measure 44 features a half note followed by a quarter note. Dynamics range from *mf* to *f* (forte).

46



Measures 46-47: Treble clef, key signature of one sharp (F#), 3/4 time signature. Measure 46 features a half note followed by a quarter note. Measure 47 features a half note followed by a quarter note. Dynamics range from *f* to *f*.

50



Measures 50-51: Treble clef, key signature of one sharp (F#), 4/4 time signature. Measure 50 features a half note followed by a quarter note. Measure 51 features a half note followed by a quarter note. Dynamics range from *mp* (mezzo-piano) to *mp*.

53



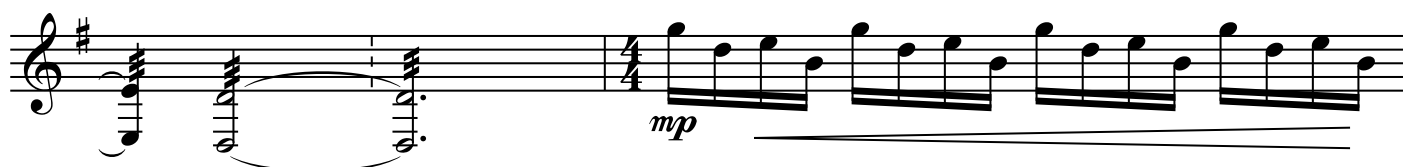
Measures 53-54: Treble clef, key signature of one sharp (F#), 3/4 time signature. The music consists of eighth notes. Dynamics range from *f* to *f*.

55



Measures 55-56: Treble clef, key signature of one sharp (F#), 3/4 time signature. Measure 55 features a half note followed by a quarter note. Measure 56 features a half note followed by a quarter note. Dynamics range from *mf* to *mf*.

59



Measures 59-60: Treble clef, key signature of one sharp (F#), 4/4 time signature. Measure 59 features a half note followed by a quarter note. Measure 60 features a half note followed by a quarter note. Dynamics range from *mp* to *mp*.

62



Measures 62-63: Treble clef, key signature of one sharp (F#), 3/4 time signature. The music consists of eighth notes. Dynamics range from *f* to *mp*.

64

f

68

ff

72

75

漸慢

原速

1.

sf

78

82

5

ff

84 原速 (如需要, 第84-89小節可高半度演奏)

84

2.

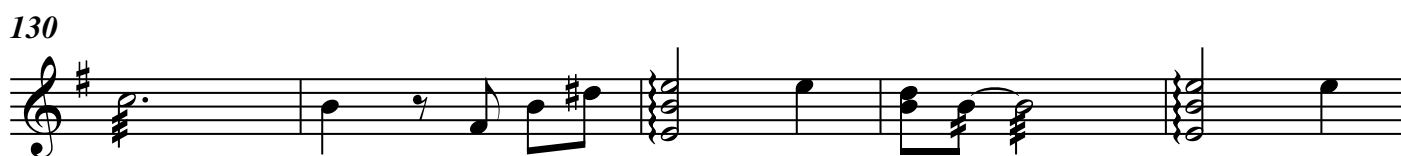
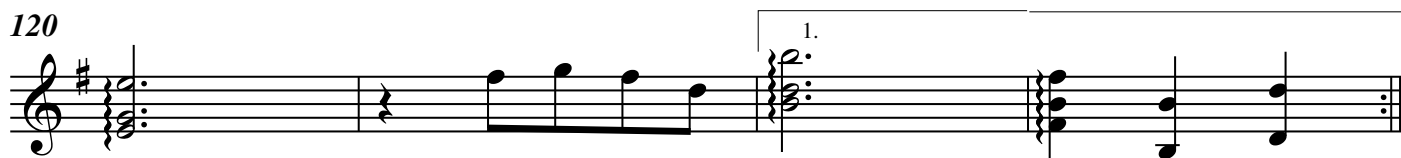
sf

88

92

p *fff*

96 如歌地 (♩ = 108)



144



稍輕快 (♩ = 110)

148



152



156



160



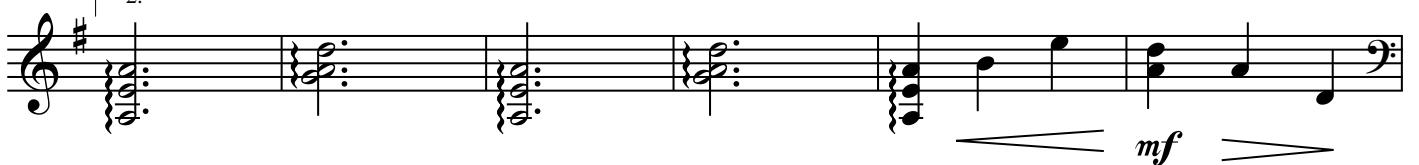
164



168



172



178

