

高音笙

# 幻想曲 秦·兵馬俑

彭修文

一、軍整肅，封禪遨遊幾時休

不快的進行

29

*mf* *mf*

33

*f* *mp*

37

*ff* *mp* *ff* 6

46

*f*

49

53

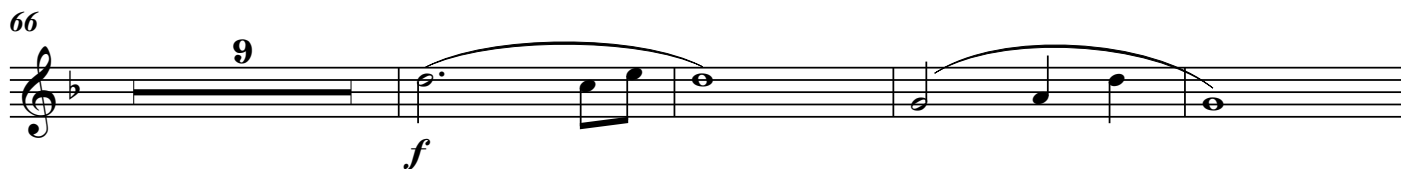
57

2 *mf*

62

*mp*

66



*f*

79



83



*mp*

87



*f*

91



*f*

104 小快板，緊張地 ♩ = 144



*f*

114 威武雄壯地



118 堂皇絢麗，有氣派地



*f*

127

131

135

139

143

147

151

155

漸慢

慢起漸快

166



170



174



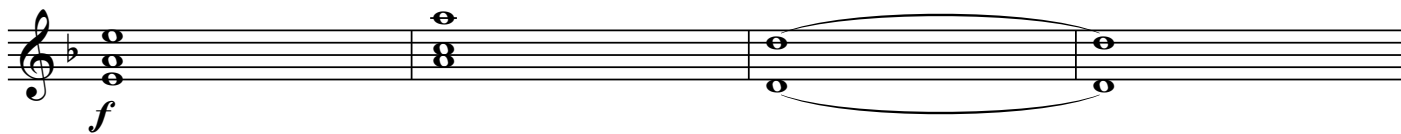
178



182

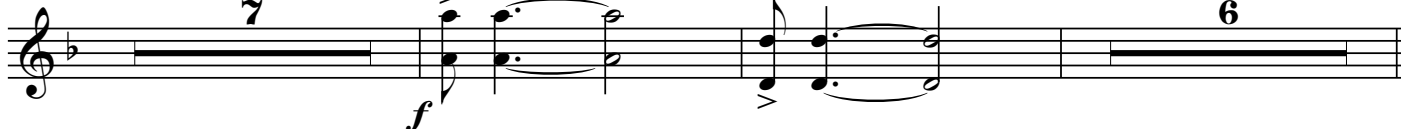


186



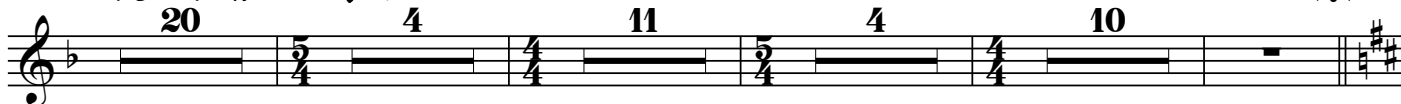
逐漸地慢，弱

190



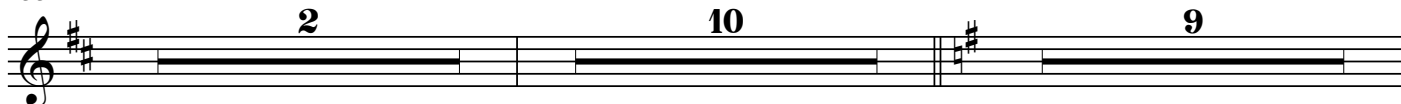
二、春閨夢，征人思歸相思苦

205 緩慢，寂靜地 嗚咽地



255 ♩ = 52 - 54

較自由地，悽苦，思念 清空的，回憶的，稍慢 ♩ = 48



276

*mf*

(彭修文取消289小節)

280

4 4 5

*p*

295 漸慢 夢 驚夢 = 125

9 4

310

*mf* *f*

314 稍快

*ff*

317

320

*mf*

323

326

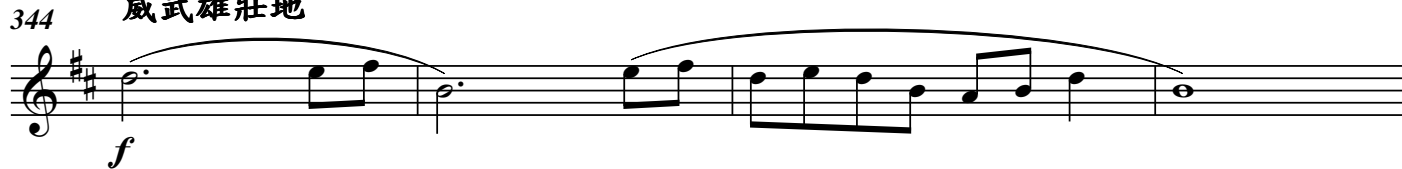
*f* *mf*

**三、大轟懸，關山萬里共雪寒**

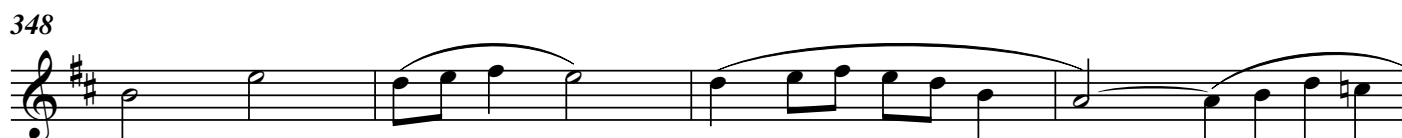
328 14 漸慢


**Allargando**
**威武雄壯地**

344 *f*



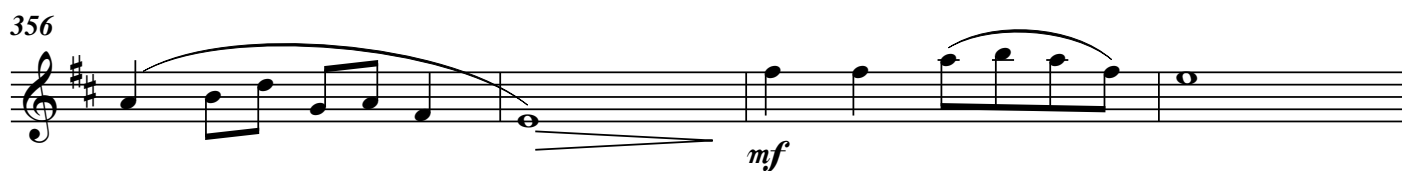
348



352



356 *mf*

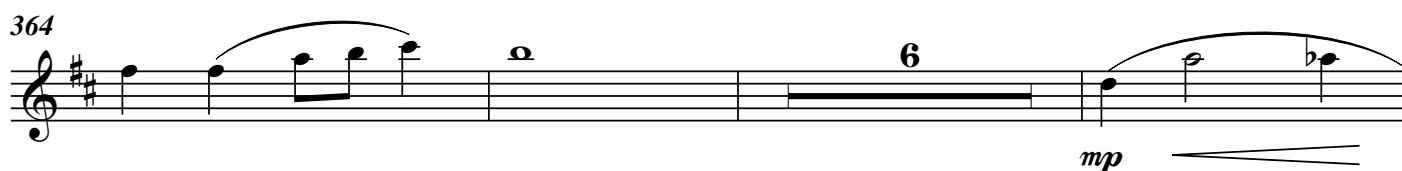


360

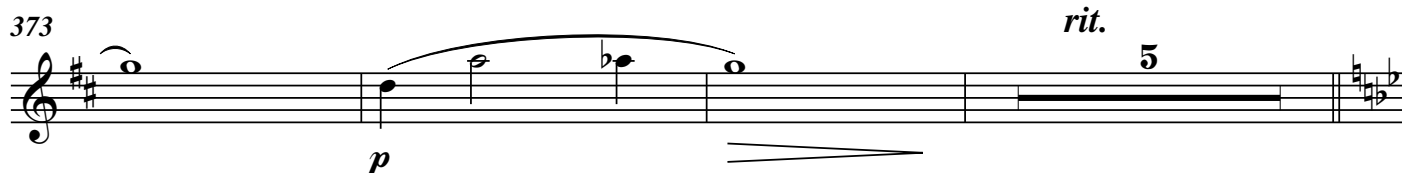


364 *mp*

6



373 *p* *rit.* 5



381 慢  $\text{♩} = 69 - 72$

(389a) (389b)

8 2

*mf*

Detailed description: This staff contains measures 381 to 392. It begins with a treble clef and a key signature of one flat. Measure 381 has a whole rest with an '8' above it. Measures 382-388 have whole rests. Measure 389 is split into two parts, (389a) and (389b), both with whole rests. Measure 390 has a whole rest with a '2' above it. Measures 391-392 feature a sustained chord with a *mf* dynamic marking.

393

*mf*

Detailed description: This staff contains measures 393 to 396. It features a series of chords with accents (>) and slurs. The dynamics are marked *mf*.

397

5

Detailed description: This staff contains measures 397 to 404. It consists of a sequence of chords, some with slurs, and ends with a whole rest with a '5' above it.

405

*f*

Detailed description: This staff contains measures 405 to 408. It features chords with accents (>) and slurs, with a dynamic marking of *f*.

409

*f*

Detailed description: This staff contains measures 409 to 412. It features chords with accents (>) and slurs, with a dynamic marking of *f*.

413

*ff*

Detailed description: This staff contains measures 413 to 416. It features chords with accents (>) and slurs, with a dynamic marking of *ff*.